

30014, 30016

Emergency Handheld Drench Hose and Eye/Face Wash

A range of wall or table mounted units, available with one or two nozzles, developed to suit hazardous environments where there is a risk of small spillages of chemicals or dangerous substances.

The 1.5 m (4.9 ft) of reinforced hose makes these handheld devices particularly useful for treating disabled personnel. The unique lock-on actuating button for ease of use meets European and international standards. Fitted with dust covers, a non-return valve and a flow regulator.



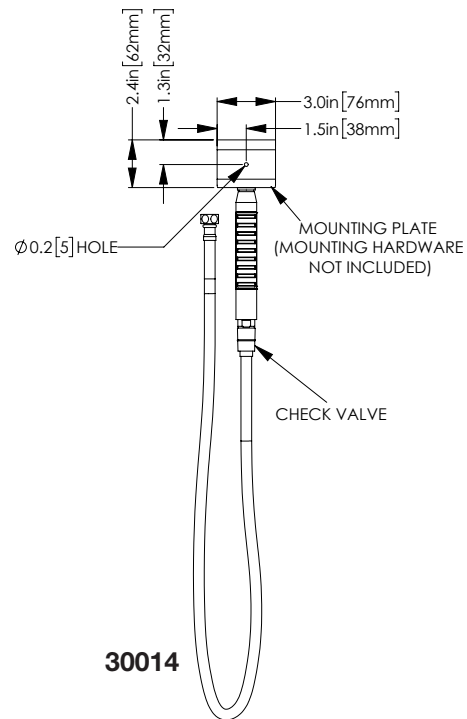
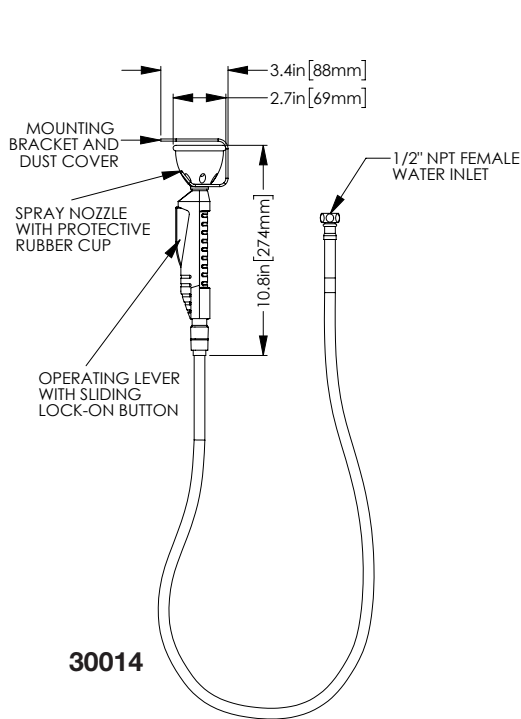
Specifications

MATERIALS OF CONSTRUCTION	
SHOWER SPRAY OUTLET	Powder coated brass
RUBBER SAFETY EYE CUPS	Ethylene propylene (EPDM)
PLASTIC DUST COVERS	Acetal/Polycarbonate
PLASTIC BODY	Polyarylamide (reinforced with glass fibers)
STANDARD FINISH	Green and white
SERVICES	
WATER INLET	1/2 in Female NPT - hose connection
DESIGN OPERATING PRESSURE	1.5 to 6 BAR G (22 to 87 PSI)
TEST PRESSURE	10.3 BAR G (149 PSI)
MINIMUM FLOW RATES	30014 - 8 liters/minute minimum (2.11 US Gallons) 30016 - 12 liters/minute minimum (3 US Gallons)
ENVIRONMENTAL OPERATING TEMPERATURE	
MINIMUM AMBIENT OPERATING TEMPERATURE	5° C (41° F)
MAXIMUM AMBIENT OPERATING TEMPERATURE	35° C (95° F)
ACTIVATION/OPERATION	
EYE/FACE WASH	Squeeze grip operated - with sliding lock-on button
WEIGHTS and DIMENSIONS	
DIMENSIONS (WxDxH)	30014 - 69 mm (2.7 in) x 69 mm (2.7 in) x 274 mm (10.8 in) 30016 - 149 mm (5.9 in) x 137 mm (5.4 in) x 341 mm (13.4 in)
WEIGHT	30014, 30016 - 1 kg (2 lb)

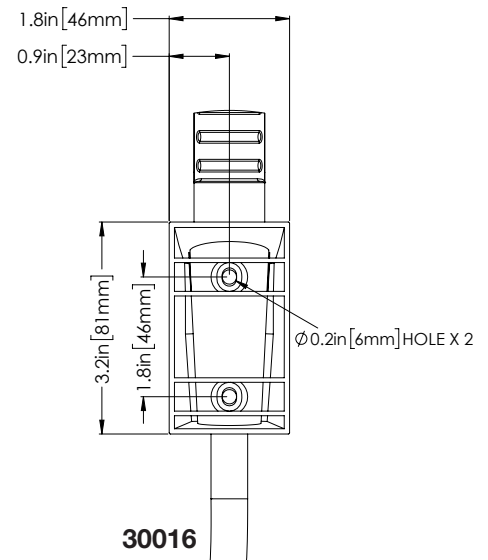
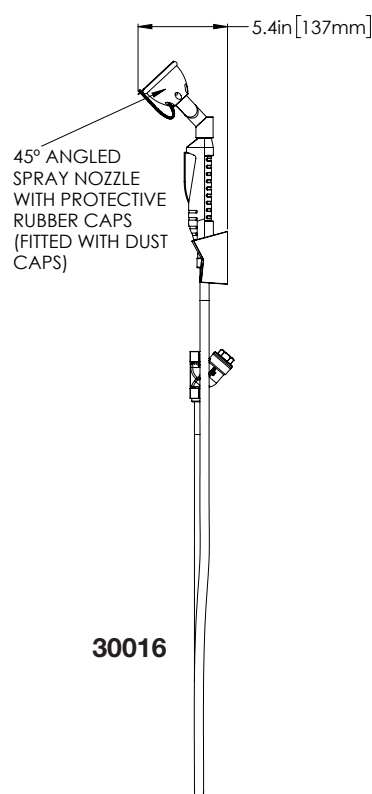
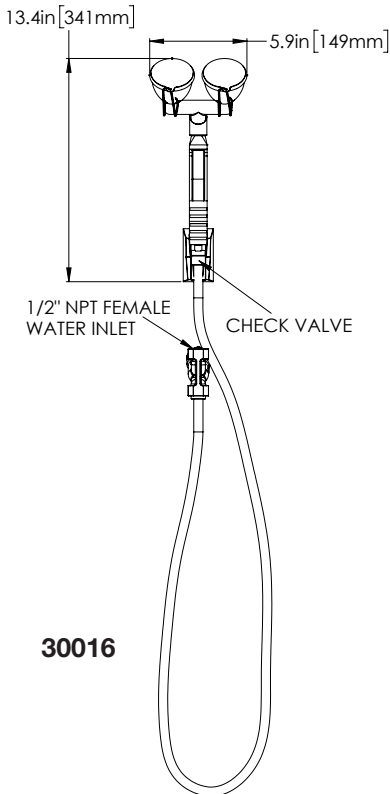
30014
30016

Product Data Sheet - G.A. Drawings

Emergency Handheld Drench Hose and Eye/Face Wash



VARIATIONS IN MANUFACTURING AND ASSEMBLY
ALLOW FOR $\pm 1/8$ in [3 mm] PER THREADED JOINT.



MOUNTING BRACKET VIEW
(MOUNTING HARDWARE NOT INCLUDED)

North America: 1-800-798-9250
custserv@justritemfg.com

Europe: 1-217-234-7494
Asia Pacific: 011+86-756-322-9909
internationalcs@justritemfg.com

©2017 Justrite Mfg. Co., LLC

JUSTRITE
justrite.com